

AJAX Security system

Your protection in an imperfect world



HUBS

The hub manages all devices within the security system. It notifies users and an alarm response company about any threats instantly. The use of two-way communication allows hubs to send alarm signals, configure devices remotely, and constantly monitor the system's state

Tech Specs

- Color: white/black
- Installation: indoors
- Radio communication range: up to 2,000 m
- Alarm delivery speed: 0.15 sec
- Alarm notification types: SMS, call, push-notification
- CMS connectivity: SIA, Sur-Gard (Contact ID)
- Power supply: 110–240 V AC (12 V power supply unit is available on demand)
- Battery backup: Li-Ion 2 A·h
Up to 16 hours of operation
- Operating temperature range: from -10°C to +40°C
- Permissible humidity: up to 75%
- Dimensions: 163×163×36 mm
- Weight
Hub/Hub Plus: 350 g
Hub 2: 362 g



Effortless Operation



Instant alarm delivery even with slow Internet connection



Two-way radio communication for testing and configuring of the connected devices



New security and automation features with automatic over the air OS updates



Multiple ways to control the system and connected devices: mobile and desktop apps, key fobs, keypads, smart buttons

Simple Installation

1

Connect devices to the hub with the mobile app

2

Use the SmartBracket to mount the hub without disassembling it

3

Open the app to configure hub's settings



MOTIONCAM

Wireless motion detector that notifies the owner of the first signs of home or office intrusion. The detector is fastened to the wall in front of the doors and other places likely of intruder entry.

Tech Specs

- Color: white/black
- Installation: indoors
- Recommended installation height: 2.4 m
- Radio communication range: up to 1,700 m
- Compatibility: only Hub 2
- Sensing element: PIR sensor
- Detection angle:
Horizontal — 88.5°
Vertical — 80°
- Camera view angle: 90°
- Motion detection distance: up to 12 m
- Image resolution:
160x120 / 320x240 / 640x480 px
- Pictures in a series: 1–5 pcs
- Temperature sensor: available
- Battery: 2x CR123A, pre-installed
- Battery life: up to 4 years
- Protection class: IP50
- Operating temperature range: from +0°C to +40°C
- Permissible humidity: up to 75%
- Dimensions: 135x70x60 mm
- Weight: 167 g



Effortless Operation

- 3 adjustable sensitivity levels
- Two-way communication with the hub for testing and configuring
- Proprietary SmartDetect algorithm to prevent false alarms
- Digital temperature compensation
- Pet-immunity algorithm to ignore the pets that are less than 20 kg in weight and 50 cm in height

Simple Installation



Scan the QR code to connect the device to the hub



Use the SmartBracket to mount the device without disassembling it



Open the app to test connection quality and configure device settings



STREETSIREN

Wireless siren with LED frame and piezoelectric buzzer. The device is designed for both outdoor and indoor installation.

Tech Specs

- Color: white/black
- Radio communication range: up to 1,500 m
- Compatibility: all hubs & ReX
- Type of indication: sound/light
- Sound volume level: adjustable, 81–113 dB at a distance of 1 m
- Alarm length: adjustable, 3–180 s
- Battery: 4x CR123A, pre-installed
- Battery life: up to 5 years
- Optional supply: 12 V, 1.5 A DC
- Protection class: IP54
- Operating temperature range: from -25°C to +50°C
- Permissible humidity: up to 95%
- Dimensions: 200×200×51 mm
- Weight: 528 g



Maximum Performance

- Communicates at a distance of up to 1,500 m from the hub
- Operates even at extremely high or low temperatures
- Indicates armed/disarmed states and low battery charge using a built-in LED
- Generates an audible warning if *delay when entering/leaving* mode is activated
- Indicates with sound and light when system's status changes if *beep when arming/disarming* mode is activated
- Operates up to 5 years on the pre-installed batteries and supports external power supply

Simple Installation



Scan the QR code to connect the device to the hub



Use the SmartBracket to mount the device without disassembling it



Open the app to test connection quality and configure device settings

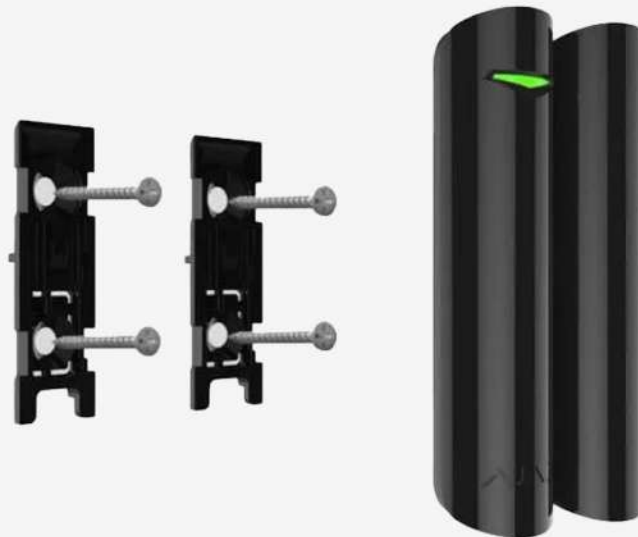


DOORPROTECT

Wireless opening detector that notifies of first signs of room intrusion by means of a broken door or window. It can be mounted on all types of doors including a metal base.

Tech Specs

- Color: white/black
- Installation: indoors
- Radio communication range: up to 1,200 m
- Compatibility: all hubs & ReX
- Sensing element: reed switch
- Activation thresholds:
Small magnet — 1 cm
Big magnet — 2 cm
- Temperature sensor: available
- Battery: CR123A, pre-installed
- Battery life
DoorProtect: up to 7 years
DoorProtect Plus: up to 5 years
- Protection class: IP50
- Operating temperature range: from +5°C to +40°C
- Permissible humidity: up to 75%
- Dimensions:
Diameter — 20 mm
Height — 90 mm
- Weight: 30 g



Maximum Performance

- Communicates at a distance of up to 1,200 m from the hub
- Delivers an alarm signal within 0.15 s
- Operates up to 7 years on the pre-installed battery
- Features an external contact for connecting third-party NC detectors

Simple Installation



Scan the QR code to connect the device to the hub



Use the SmartBracket to mount the device without disassembling it



Open the app to test connection quality and configure device settings



MOTIONPROTECT CURTAIN

MotionProtect Curtain is a curtain type wireless motion detector. The detector has a narrow horizontal detection angle and is designed for indoor perimeter control: windows, doorways, and other entrances or exits of the guarded facility. Maximum motion detection distance is 15 m.

Tech Specs

- Color: white/black
- Installation: indoors
- Recommended installation height: 2.4 m
- Radio communication range: up to 1,700 m
- Compatibility: all hubs & ReX
- Sensing element: two PIR sensors
- Motion detection distance: from 6 to 15 m (depending on the sensitivity level)
- Detection angles:
Horizontally – 6°
Vertically – 90°
- Temperature sensor: available
- Protection class: IP54
- Battery: CR123A, pre-installed
- Battery life: up to 3 years
- Operating temperature range: -10°C to +40°C
- Permissible humidity: up to 95%
- Dimensions: 134×44×34 mm
- Weight: 118 g



Maximum Performance

- Communicates at a distance of up to 1,700 m from the hub
- Detects motion at a distance of up to 15 m
- Delivers an alarm signal within 0.15 sec
- Operates up to 3 years on the pre-installed battery

Simple Installation



Scan the QR code to connect the device to the hub



Use the SmartBracket to mount the device without disassembling it



Open the app to test connection quality and configure device settings



KEYPAD

KeyPad is a wireless indoor touch-sensitive keyboard managing the Ajax system. Designed for indoor use. With this device, the user can arm and disarm the system and see its security status. KeyPad is protected against attempts to guess the code and can raise a silent alarm when the code is entered under duress.

Tech Specs

- Color: white/black
- Device type: wireless
- Installation: indoors
- Radio communication range: up to 1,700 m
- Compatibility: all hubs & ReX
- Temperature sensor: available
- Duress code: yes
- Protection against password attack: yes
- Battery: 4x AAA, pre-installed
- Battery life: up to 2 years
- Operating temperature range: from -10°C to +40°C
- Permissible humidity: up to 75%
- Dimensions: 150x103x14 mm
- Weight: 197 g



Maximum Performance

- Communicates at a distance of up to 1,700 m from the hub
- Arms and disarms the entire security system or certain groups, activates the Night mode
- Allows to assign personal passcodes to each user
- Features duress code protection to raise a silent alarm in case users are forced to disarm the system
- Operates up to 2 years on the pre-installed batteries

Simple Installation



Scan the QR code to connect the device to the hub



Use the SmartBracket to mount the device without disassembling it



Open the app to test connection quality and configure device settings